

GFSI : Overview and comparaison of schemes

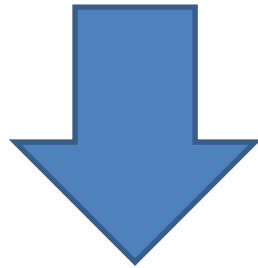
CMC

May 5, 2011

GFSI Background

In 2000.....

- Food safety crises
- Proliferation of individual retailer schemes
- Burden to suppliers and producers due to frequent audits



- Lack of efficiency and high costs in the food supply chain

Global Food Safety Initiative

- GFSI launched at the CIES Annual Congress in 2000, following a directive from the food business CEOs.
- Food Safety was then, and is still, top of mind with consumers. Consumer trust needs to be strengthened and maintained, while making the supply chain safer.
- Managed by The Consumer Goods Forum

GFSI managed by The Consumer Goods Forum

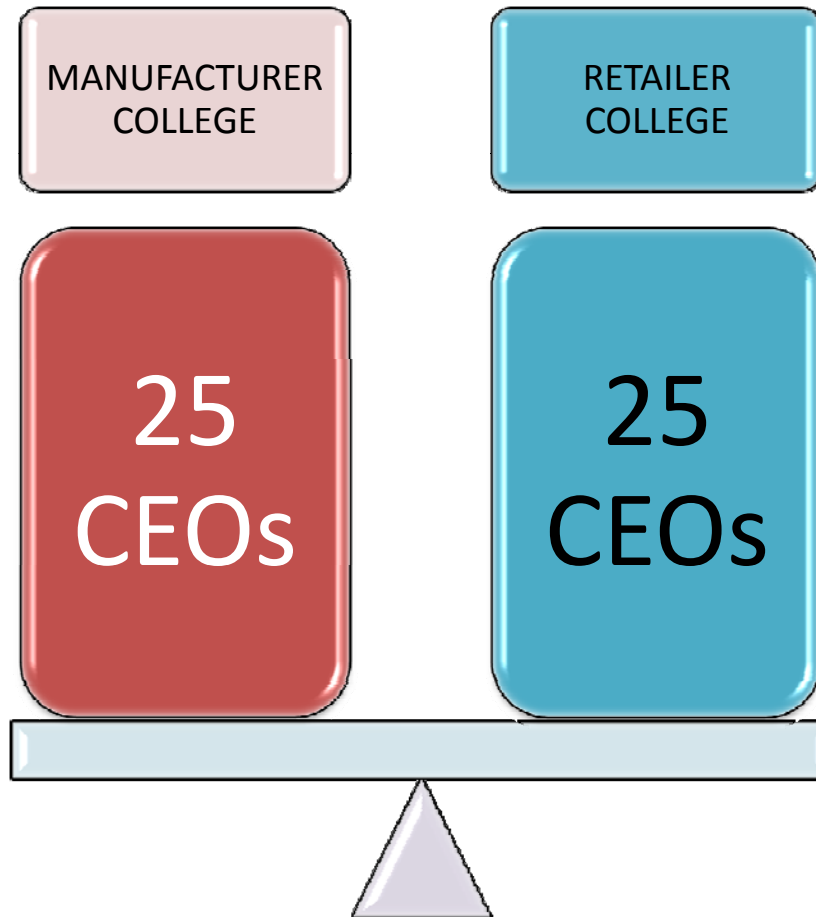
- An independent global parity-based Consumer Goods network
- Over 650 Members
- Representing 70 countries
- Over 3 continents





€ 2.1 trillion

THE CONSUMER GOODS FORUM BOARD OF DIRECTORS



Retailer College

AEON

Ahold



Waitrose

Dairy Farm

DELHAIZE GROUP

EXITO

FairPrice
NTUC

HIT

ICA

Izumiya
<http://www.izumiya.co.jp>

JERÓNIMO MARTINS



METRO Group
MADE TO TRADE.

MIGROS

SUPERVALU

Gruppo PAM S.p.A.

Pick n Pay

Sobeys

BHG 北京華聯集團投資控股有限公司
BEIJING HUALIAN GROUP INVESTMENT HOLDING CO.,LTD.

TESCO

Carrefour

Walmart

Wegmans

Woolworths
the fresh food people

Manufacturer College

AJINOMOTO®



BDF ●●●●
Beiersdorf



Coca-Cola



DANONE



General Mills



Johnson & Johnson

KaO

Kellogg's

KIRIN



L'ORÉAL®



P&G



PEPSICO



SC Johnson
A FAMILY COMPANY



« Safe Food for Consumers Everywhere »

GFSI Mission

Driving continuous improvement in food safety to strengthen consumer confidence worldwide

GFSI Objectives



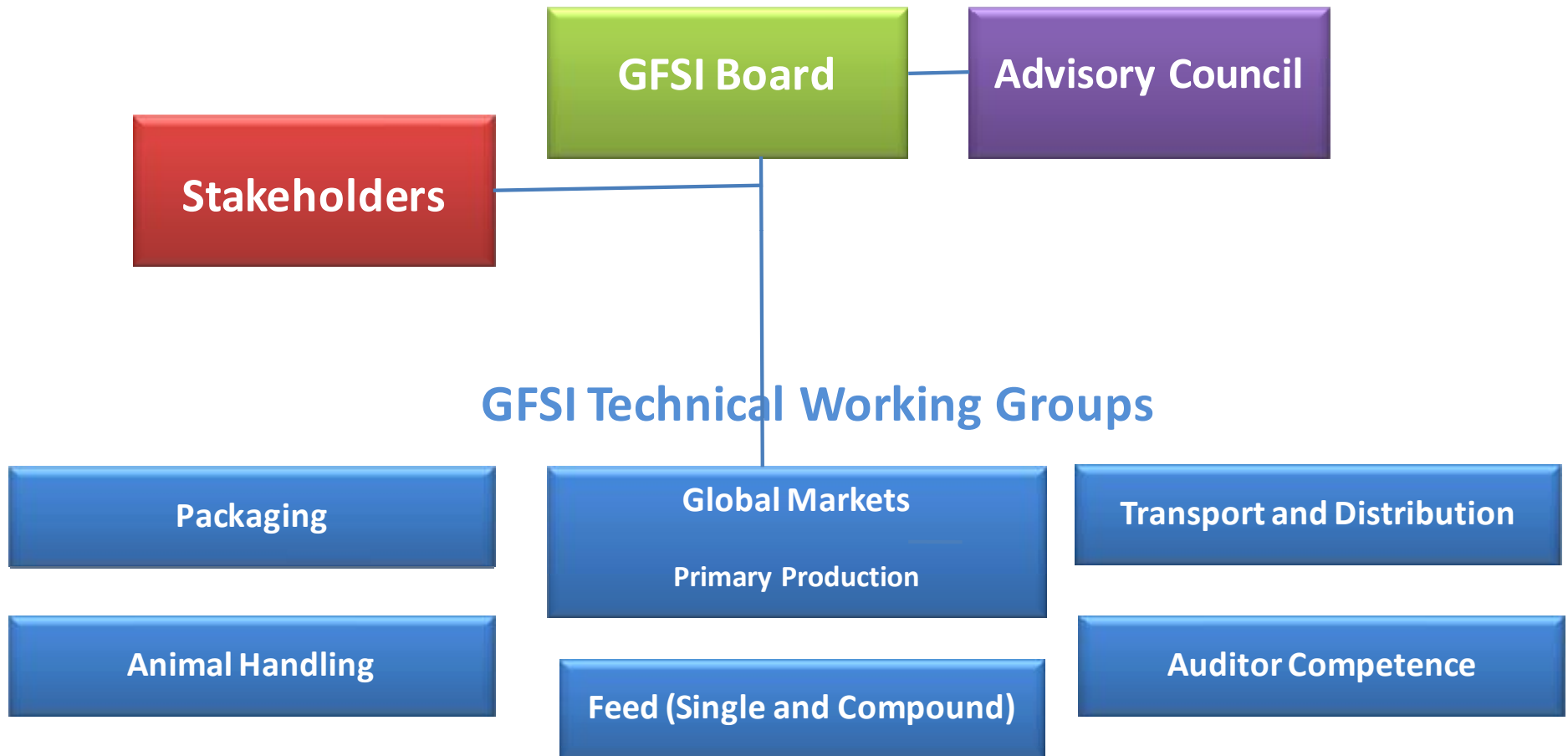
How does GFSI work?

- Benchmarks existing food safety schemes, including pre-farm gate schemes against the GFSI Guidance Document.
- Determines whether a scheme is equivalent to the Guidance Document requirements.
- Helps and encourages food safety stakeholders to share knowledge and strategy for food safety and to develop best food safety practice in a common global framework.

What GFSI Does NOT Do

- Make policy for retailers or manufacturers
- Make policy for standard owners
- Undertake any accreditation or certification activities
- Have involvement with an area outside the scope of food safety i.e. animal welfare, environment and ethical sourcing

GFSI Governance Model and Activities



GFSI Foundation Board of Directors

- Hugo Byrnes, **Royal Ahold**, The Netherlands
- Marcos Campos, **JBS**, Brazil
- Kevin Chen, **China Resources Vanguard**, P.R. China
- Carol Ciszek, **Kraft Foods**, USA
- D.V. Darshane, **Coca-Cola**, USA
- Bryan Farnsworth, **Hormel Foods**, USA
- Hervé Gomichon, **Carrefour**, France
- Cenk Gurol, **Aeon Global**, Japan
- Cindy Jiang, **McDonald's**, USA (*Vice Chair*)
- Mike Liewen, **Yum! Brands**, USA
- Jürgen Matern, **Metro**, Germany (*Chairman*)
- Payton Pruett, **Kroger**, USA
- Yves Rey, **Danone**, France (*Vice Chair*)
- Michael Robach, **Cargill**, USA
- Rick Roop, **Tyson Foods**, USA
- Zao Tian Wan, **COFCO Corporation**, China
- Frank Yiannas, **Wal-Mart**, USA

Providing strategic direction and supervision of GFSI, and governance to the GFSI Technical Working Groups.

GFSI Advisory Council

- A body of experts composed of academics, non-government organization members and government members.
- Will provide perspectives on the implementation of GFSI's strategic objectives.

GFSI Technical Working Groups



Some companies now accepting GSFI recognised schemes



DIFFÉRENCES ENTRE LES SCHÈMES

Schèmes acceptés selon GFSI



Les schèmes les plus connus au Canada

- SQF: Safe Quality Food
- BRC: British retail council
- FSSC 22000

SQF

- Basé aux USA
 - Intègre la qualité et la salubrité
 - HACCP basé sur le Codex
 - Fonctionne pour toutes les étapes d'approvisionnement
- Répandu en Amérique du Nord et en Australie ainsi qu'au moyen orient
- Près de la moitié du marché Nord Américain

Avantages de SQF

- Indique l'engagement du producteur/transformateur pour la gestion qualité
- Norme mondiale accès rapide au marché global
- Audits de tierce partie reconnus
- Le processus d'amélioration continu peut améliorer la rentabilité

BRC

- The British Retail Consortium (BRC) est une association commerciale britannique
- Norme utilisée pour évaluer les manufacturiers de marques privées
- Souvent prise comme référence de l'industrie alimentaire

www.brc.org.uk

BRC

- Créé par des détaillants britanniques dont:
 - *Tesco's, Asda (Wal-Mart), Sainsburys*
- Vérifie les systèmes qualité, salubrité et légaux
- Peut seulement être certifié par les organismes de certification reconnus et leurs sous-traitants

FSSC 22000

- Norme internationale de basé sur ISO 22000 et PAS 220
- Norme en émergence
- Plus connue en Europe mais en implantation au Canada et aux USA